

To view email online [click here](#)



## SUNLAND DUBAI PROJECT UPDATES



August Update

### Construction Updates

- [Palazzo Versace ...](#)
- [D1 Constructi...](#)
- [White Bay Whi...](#)

#### Palazzo Versace

Formwork on Palazzo Versace has reached level two on the West condominium wing (Ala Destra). Work on the eastern wing basements is still ongoing with one more bay remaining to be cast in the third basement to complete casting under the building footprint.

Over 29,500m<sup>3</sup> of concrete has already been cast in the project.

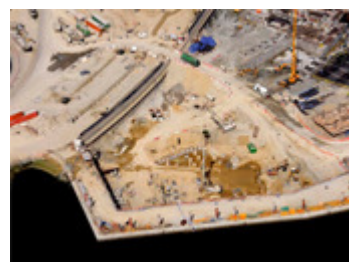


Construction Site Palazzo Versace

[>> TOP](#)

#### D1

Excavation of the D1 lift pits is now underway. A total of eight passenger lifts and one service lift will operate in the 80 storey tower and will travel from ground floor to level 80 at more than eight meters per second.



Construction Site D1

[>> TOP](#)

#### White Bay

The first island at White Bay is now starting to take shape, with the retaining wall for the south portion of the island completed.

Dredging of the channel between the island and the mainland is underway with sediment being removed from the canal and dewatered via the island.

Once the first portion of the island is filled, the northern section will be outlined and filled in the same way.

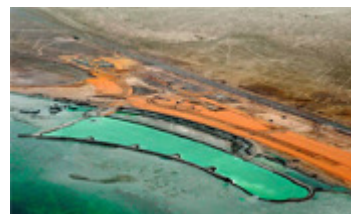
On the mainland, roading works are also underway. Preparations for the villa foundations are nearly completed, and it is expected that the display villa is completed and open to the public by the end of the year.



*White Bay, Umm Al Quwain*



*Portion of island visible in aerial photographs is outlined in red*



*View of White Bay showing the first half of the first island*

[>> TOP](#)

Showroom 6-003,  
Building 6, Gold & Diamond Park,  
Sheikh Zayed Rd, Dubai

Phone: +971 43320226  
Fax: +971 43320225  
Toll Free (within UAE): 800 9002

This email was sent to [Email]

You have received this email from Sunland Group, PO Box 1301, Surfers Paradise, Australia 4217

[Unsubscribe](#)

POWERED BY  
**ezymsg**